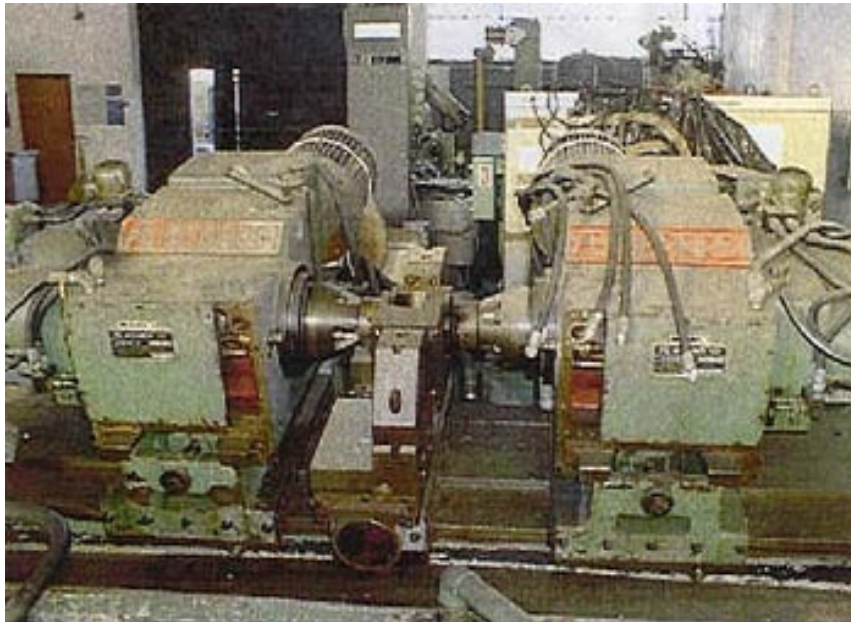


MISCELLANEOUS  
HEADING MACHINE - BERARDI



**HEADS NR: 2**

**SPINDLE ROTATION: 100-200 rpm, 270-540 rpm (both spindles)**

**MAX DISTANCE BETWEEN SPINDLE-HEAD 1 AND SPINDLE-HEAD 2: 1500 mm**

**CENTERS HEIGHT: 350 mm**

**MACHINE DEIMENSIONS: 3500 x 1500 mm**

**ELECTRIC BOX MACHINE: 1800 x 500 x h 2520**

**FURTHER INFORMATIONS: machine with 2 monitorig cabins and 1 cistern included**

**WEIGHT OF MACHINE: 4 ton**

**THE DATA ARE NOT TO UNDERSTAND ENGAGED**