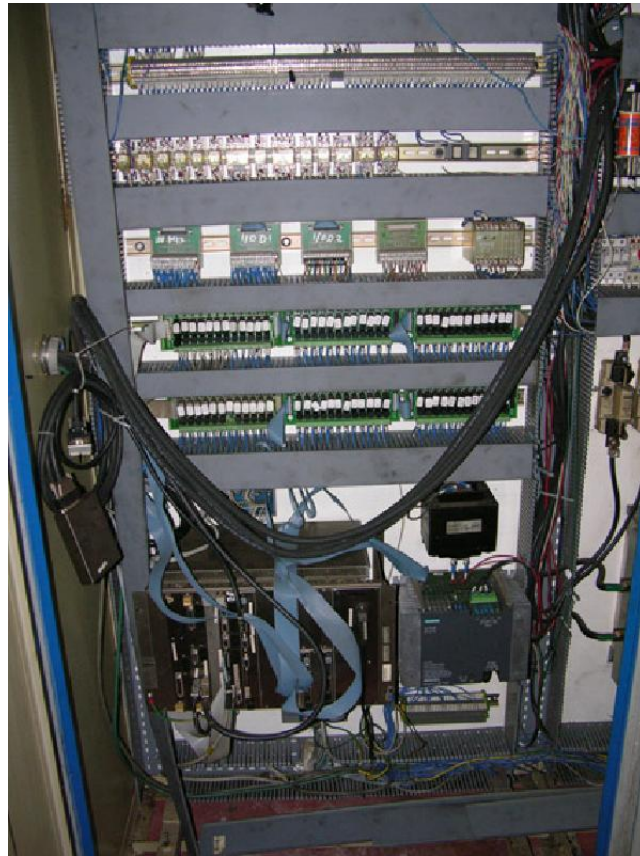


FLOOR TYPE MILLING MACHINE
MECOF CS 105 G - CNC SELCA AUTOMATIC HEAD



FLOOR TYPE MILLING MACHINE
MECOF CS 105 G - CNC SELCA AUTOMATIC HEAD



FLOOR TYPE MILLING MACHINE

MECOF CS 105 G - CNC SELCA AUTOMATIC HEAD



FLOOR TYPE MILLING MACHINE

MECOF CS 105 G - CNC SELCA AUTOMATIC HEAD



X AXES TRAVEL: 4300 mm

Y AXES TRAVEL: 1000 mm

Z AXES TRAVEL VERTICAL : 1700 mm

TABLE DIMENSIONS: 6000 x 1060 mm

T SLOTS NR: 6

MAX LOAD ON TABLE: 8 ton per meter of bed

MAIN SPINDLE DRIVE: 24 kw

SPINDLE SPEED: 1250 rpm

NR OF GEAR: 2

SPINDLE TAPER: ISO 50

MAX FEED RATE: 0-6000 mm/min

ACCESSORIES: 1 speed multiplier ISO 40, 1 universal automatic milling head (only rear corp) 1° division, 1 extension spindle attachment ISO 50

CNC: SELCA S-3045 - machine retrofitted in 2002

TOTAL WEIGHT: 21.000 kg

YOM: 1986

THE DATA ARE NOT TO UNDERSTAND ENGAGED